



EK-L BioStim Unlock Your Crop Potential With FOLIAR

Mitigate stress. Maximize yield.

EK-L BioStim helps plants cope with environmental stressors like drought, cold, heat, heavy metals, and saline soils. The natural compounds in EK-L BioStim also enhance nitrogen, potassium, and phosphorous utilization and uptake.

Key Benefits of EK-L BioStim FOLIAR

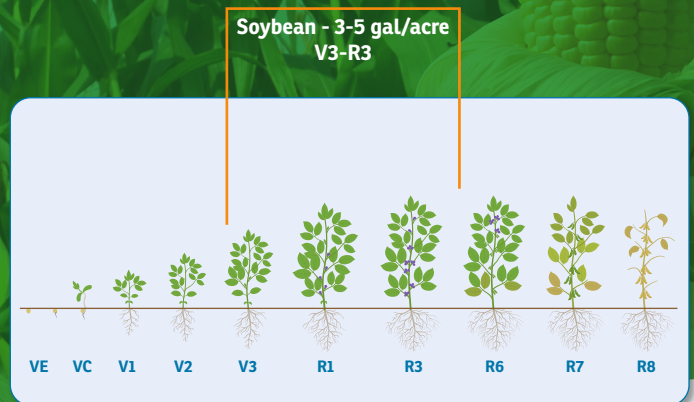
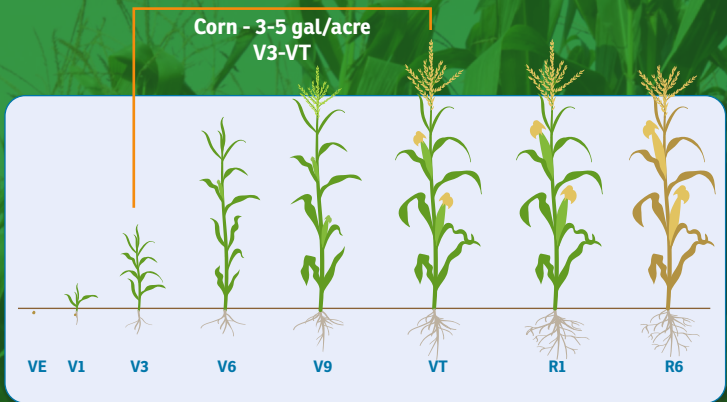
	Amino Acids	Organic Acids	Metabolites	Nutrients	Bacteria & Fungi
Benefits	Yield	Relieves Plant Stress	Enhances Resiliency	Fruit Set	Soil Health
	Quality	Soil Nutrient Acquisition	Stress Protection	Yield	Nutrient Efficiency
	Growth	Mobilizes Soil Phosphorous	Root Growth	Plant Health	Nutrient Uptake

EK-L BioStim Is Adaptable and Easy to Use

EK-L BioStim fits into your program to improve nutrient use efficiency. It can be used alone or combined with most crop inputs. For best results, add EK-L BioStim with all your foliar applications. Jar test for compatibility.

Corn - 3-5 gal/acre
V3-VT

Soybean - 3-5 gal/acre
V3-R3



See what **EK-L BioStim** can do for you!



9408 Rosedale Road, Hicksville, OH 43526
215-289-9800
envirokure.com | info@envirokure.com



EK-L BioStim For Superior Performance

Better Soil + Stronger Plants + Enhanced Stress Tolerance = Improved Yields



ENHANCED SOIL HEALTH

Increased soil biodiversity and signal native microbial communities



MEASURABLE IMPROVEMENT

in Nutrient Uptake, optimizing nitrogen-cycling, phosphorus and sulfur solubilization, and overall nutrient availability and acquisition

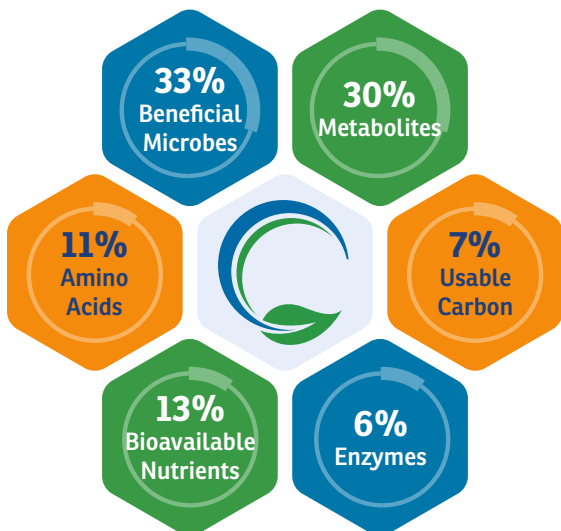


IMPROVED TOLERANCE

to Weather-related Stress, including excessive cold, heat, rainfall, and drought

Managing the Uncontrollable: Weather

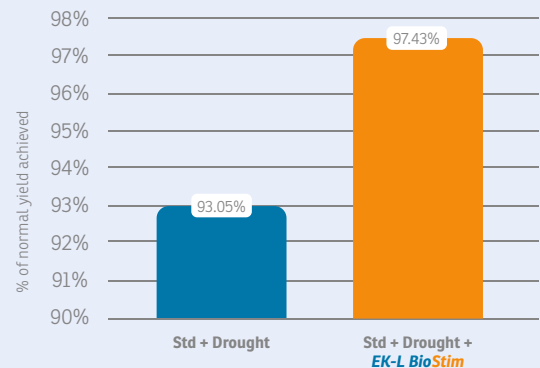
You can have the best fertility plan and excellent seed, but you can't control the negative impact of weather on your crops. **EK-L BioStim** helps plants cope with unexpected cold, heat, rainfall, and drought by building more resilient plants and a stronger response to weather-related stress.



% of active compounds

Protect Your Corn Yield During Drought

97.43% of normal yield realized with **EK-L BioStim** in-furrow and a net return of \$15.25/acre. (Return assumes \$4.25/bu corn)



Source: EnviroKure internal study

EK-L BioStim provides the essentials you need to produce the results you want

- Beneficial Microbes** diversify and feed soil microbiome
- Metabolites & Organic Acids** for better roots, reduced stress, and more resilient plant
- Amino Acids** building blocks for all plant growth
- Enzymes** breakdown nutrients and organic matter for plant uptake
- Bioavailable Nutrients** are immediately available for young plants
- Usable Carbon** provides energy for plants and microbes to thrive



See what **EK-L BioStim** can do for you!



9408 Rosedale Road, Hicksville, OH 43526
215-289-9800
envirokure.com | info@envirokure.com